



**Welcome to
SpeechMotion!**

speechmotion®

What is SpeechMotion?

speechmotion®

SpeechMotion is Service & Solutions



- Cloud-Based Medical Documentation Platform
- User-Friendly, flexible solution designed to streamline and automate the needs of healthcare organizations.
- Accessible to doctors, managers and administrators using secure internet transactions – remotely or in the office.
- Easily customize a solution to fit the unique needs of your facility, on time and under budget.



SpeechMotion is Technology



- Seamlessly integrate with all leading EMR systems, including: GE, Cerner, 3M, McKesson, Epic, NextGen, CPSI and AllScripts.
- No restrictions on the number of SpeechMotion installs, for full flexibility anywhere you need.
- Full and partial dictation for upload of complete documents or only narrative portions.

SpeechMotion is Service & Solutions

Why Are Healthcare Facilities Across the Country Choosing SpeechMotion?

Stay Current: Improve turnaround by implementing back-end speech recognition.	eSignature: Use SpeechMotion eSignature portal.	Technology: Cloud-based solutions keep data secure, but easily accessible.
Customize: Create a workflow that fits your unique needs.	Service: 24/7 tech support.	Mobility: Dictate on-the-go with smartphone dictation.
Automate: Automatically print, fax or upload documents at no extra charge.	No Hidden Fees: No support or other hidden fees. Just a simple per line rate.	Communicate: Communicate directly with staff within SpeechMotion Enterprise.

Cloud-Based & Secure

speechmotion®

speechmotion fast facts

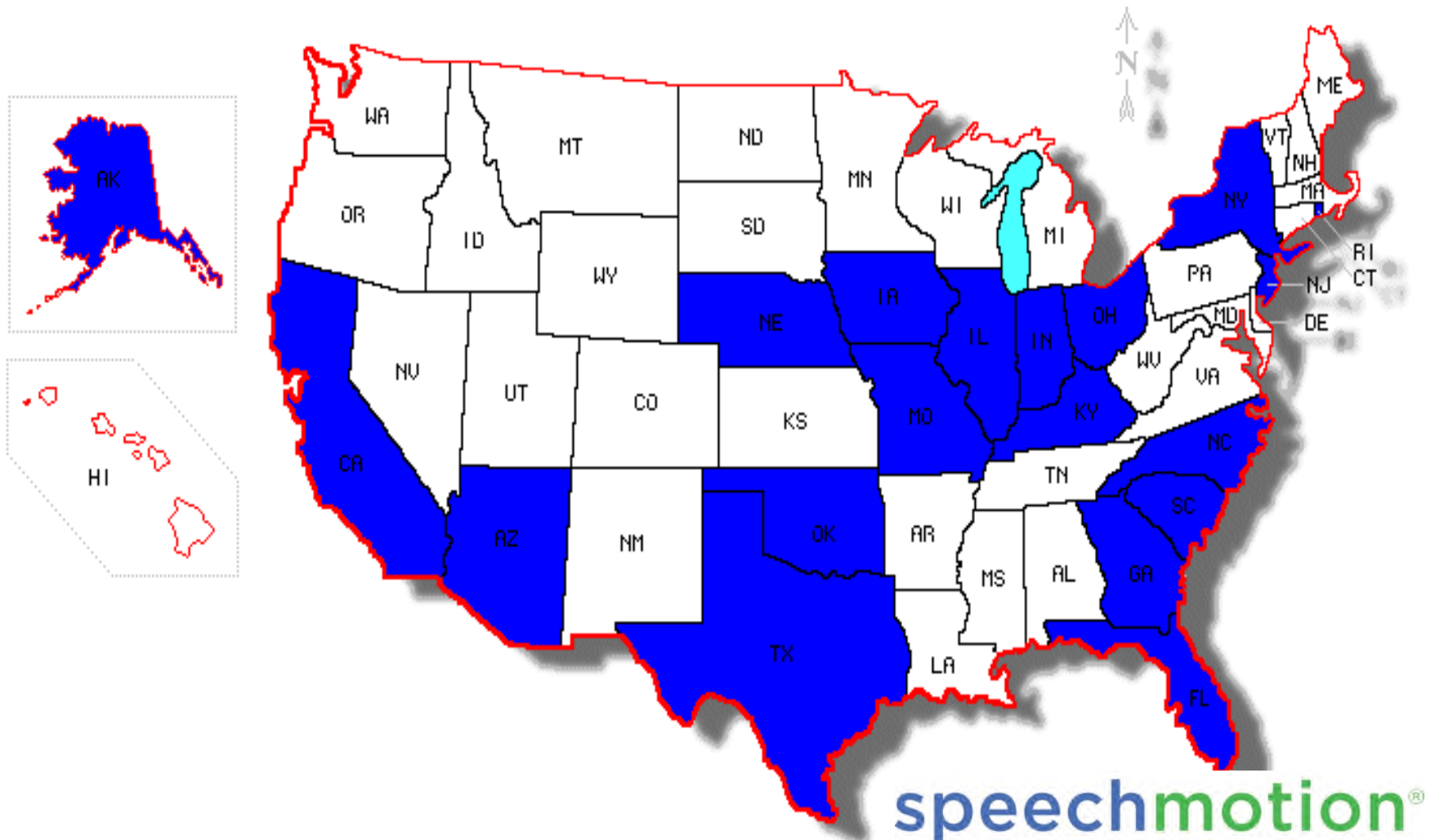
SpeechMotion Fast Facts



- **Hardened Class V Data Center**
- **Supporting 50,000 users**
- **Managing 200 million lines of transcription yearly**
- **Serving over 300 healthcare facilities**

SpeechMotion

SpeechMotion National Coverage – 19 States



speech recognition productivity improvements

Listed below are the MT Productivity Percentage Improvements 6-8 months after deploying SpeechMotion's back-end speech recognition.

This facility is one of the largest specialty clinics in Indiana, employing 80+ providers.

	Type LPH	Edit LPH	% Improvement
MT 1:	153.87	283.42	84.19%
MT 2:	158.36	228.04	44.00%
MT 3:	154.66	271.28	75.40%
MT 4:	146.45	229.05	56.40%
MT 5:	127.79	192.93	50.97%
MT 6:	154.79	219.86	42.04%
MT 7:	196.21	271.92	38.59%
MT 8:	142.77	194.82	36.46%
MT 9:	139.19	429.60	208.64%
MT 10:	150.42	217.24	44.42%
MT 11:	116.96	265.74	127.21%

Type LPH = Hourly average typing amounts for the 6 week period before back-end SR editing was introduced.

Edit LPH = Hourly average typing amounts for months 6, 7 and 8 after back-end SR editing was introduced.

Workflow

Voice Capture Options



Mobile

Providers can use their iPad, iPhone, Android or other smartphone device for dictation on-the-go.



Landline

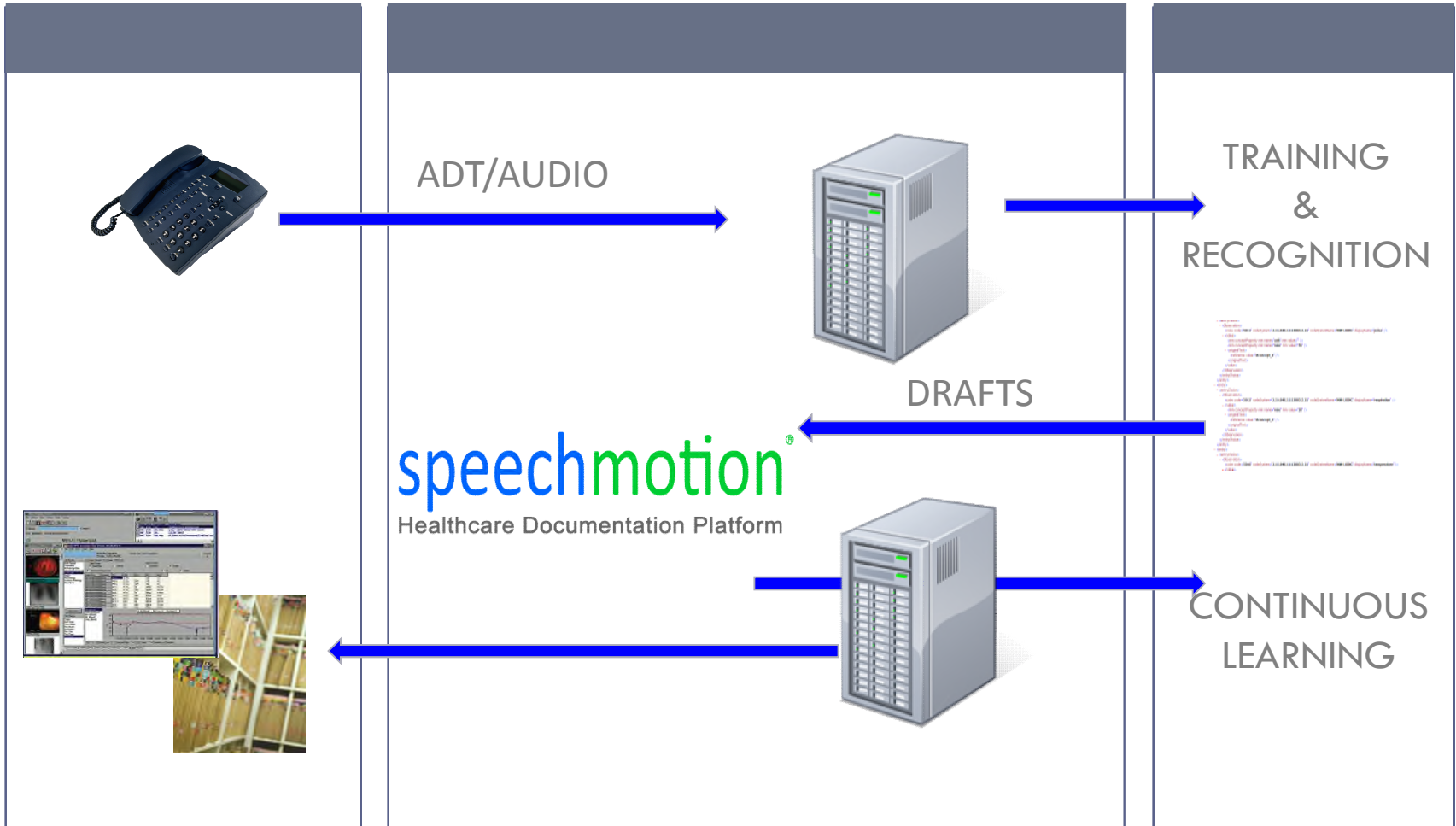
Providers dictate directly to the cloud using a toll free or local number provided by SpeechMotion. Or, they may continue to use an existing system.



Handheld

Upload dictation straight from a handheld to the cloud via any workstation with services provided by SpeechMotion.

Workflow Diagram



PC Dictation
SmartPhone



Handheld Recorder



Telephone



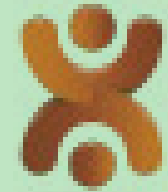
voice capture

Providers have several options to choose from for dictation, enabling mobility and efficiency.

speechmotion®

profile training
drafts

Speech Recognition by M*Modal



Advanced Speech Understanding technology creates a customized profile for each provider.

Automated document return to the enterprise's clinical applications and coordinated care providers.

adt/orders
document delivery



ADT/Orders Transfer

HL7 Return



Print Fax



Gateway Server

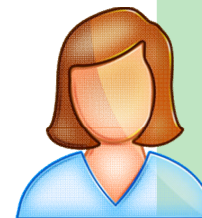
job routing
documents

SpeechMotion is accessed enterprise-wide for document processing and centralized communication.



automated job routing

Report Search



Transcription & SR Editing